

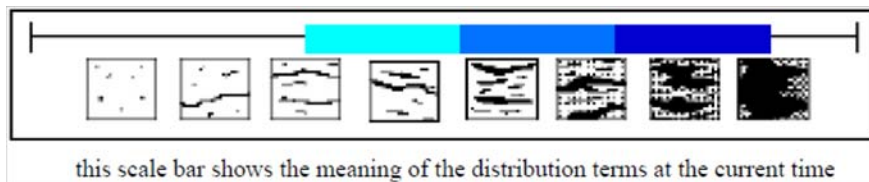
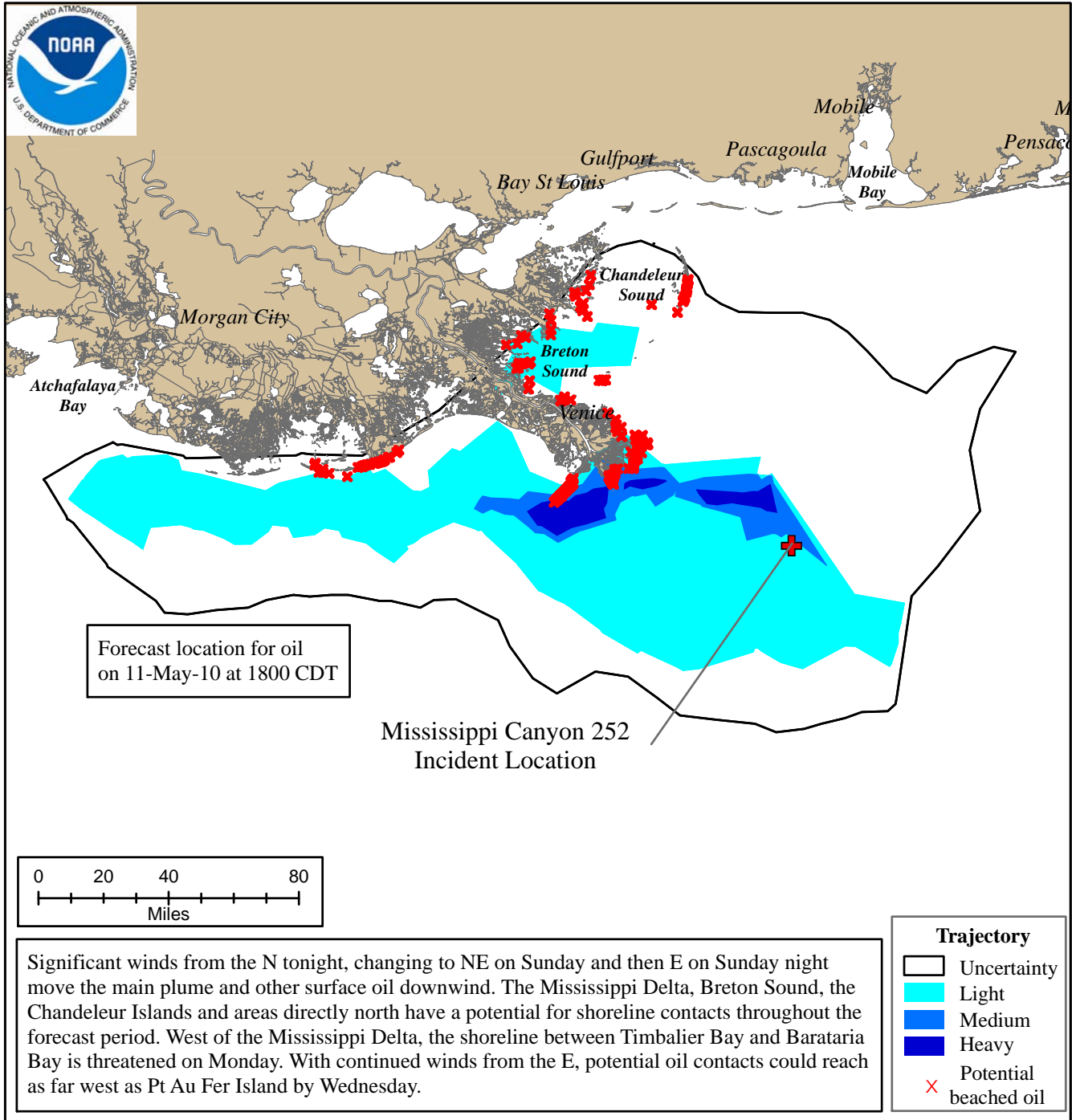
Trajectory Forecast

Mississippi Canyon 252

NOAA/NOS/OR&R

Estimate for: 1800 CDT, Tuesday, 5/11/10
 Date Prepared: 2100 CDT, Saturday, 5/08/10

This forecast is based on the NWS spot forecast from Saturday, May 8th PM. Currents were obtained from the NOAA Gulf of Mexico, West Florida Shelf/USF, Texas A&M/TGLO, and NAVO/NRL models and HFR measurements. The model was initialized from satellite imagery, analysis provided by NOAA/NESDIS obtained Saturday morning, and Friday/Saturday overflight observations. The leading edge may contain tarballs that are not readily observable from the imagery (hence not included in the model initialization). Oil near bay inlets could be brought into that bay by local tidal currents.



Next Forecast:
 May 9th PM