

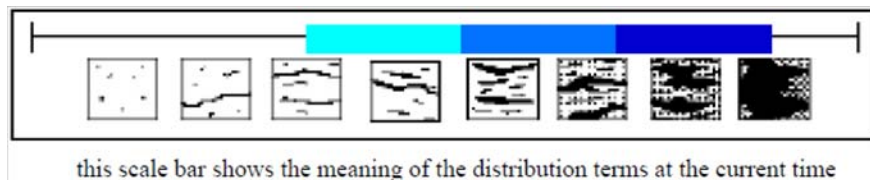
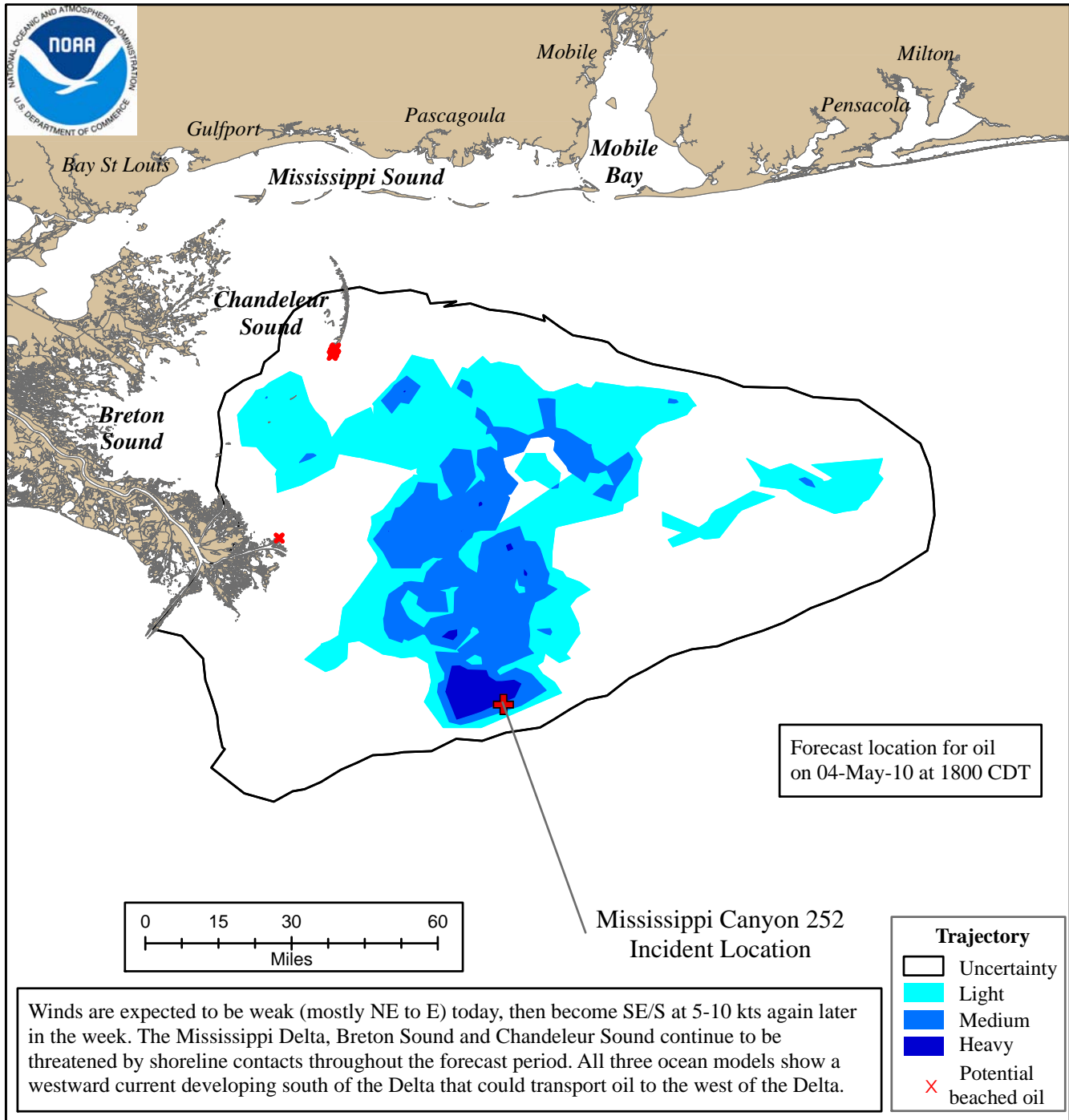
Trajectory Forecast Mississippi Canyon 252

NOAA/NOS/OR&R

Estimate for: 1800 CDT, Tuesday, 5/04/10

Date Prepared: 2300 CDT, Monday, 5/03/10

This forecast is based on the NWS spot forecast from Monday, May 3 PM. Currents were obtained from the NOAA Gulf of Mexico model, Texas A&M/TGLO, and NAVO models. The model was initialized from SLAR data obtained during a Transport Canada overflight Monday AM. The leading edge may contain tarballs that are not readily observable from the imagery (hence not included in the model initialization).



Next
Forecast:
May 4th PM