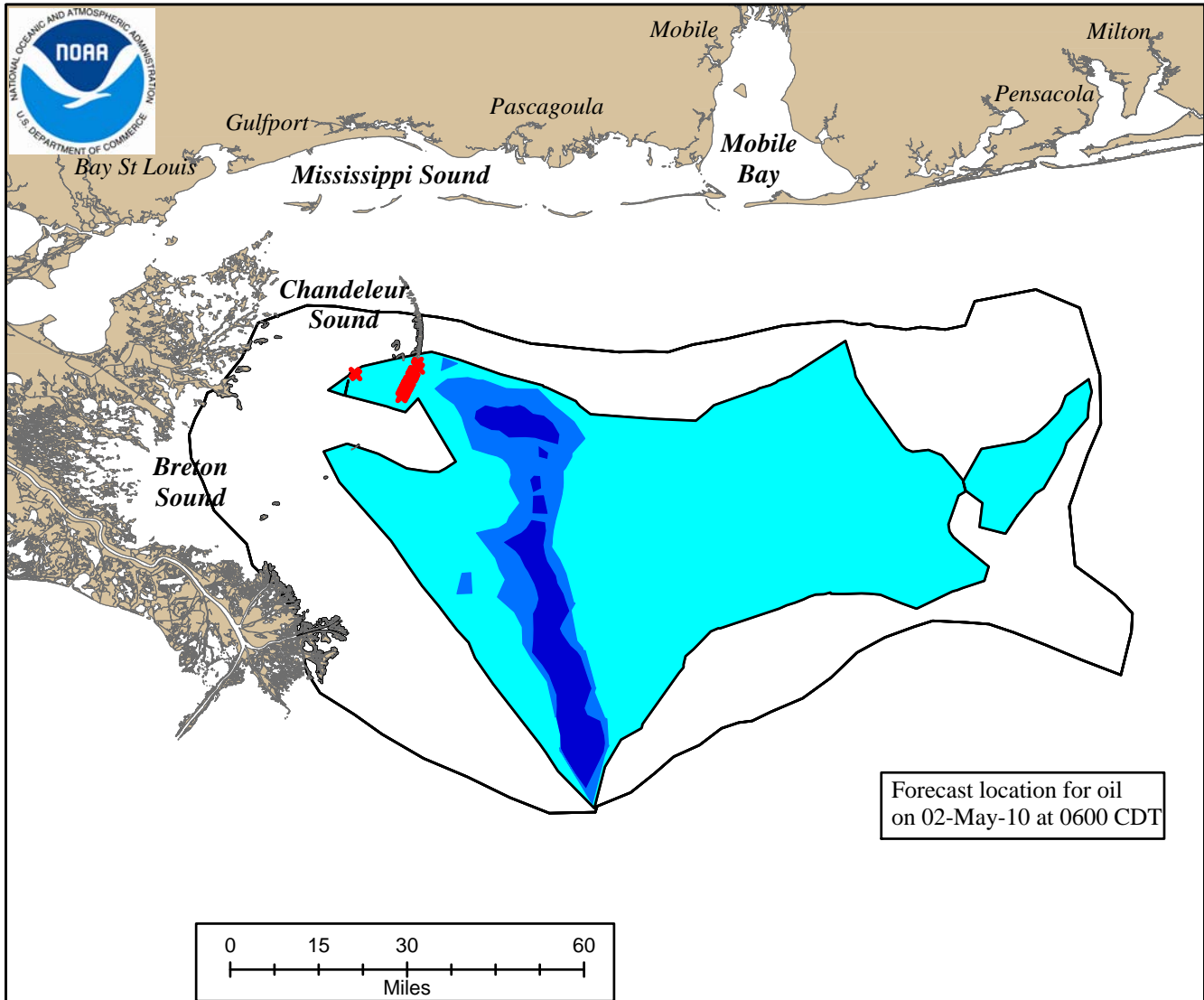


Mississippi Canyon 252

NOAA/NOS/OR&R

Estimate for: 0600 CDT, Sunday 5/02/10
 Date Prepared: 1600 CDT, Saturday 5/01/10

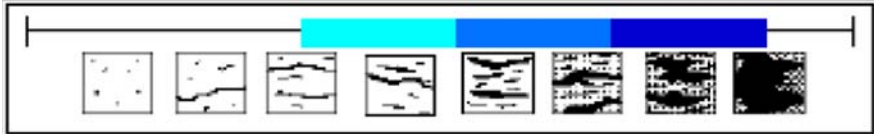
This forecast is based on the NWS spot forecast from Saturday, May 1 AM. Currents were obtained from the NOAA Gulf of Mexico model, TexasA&M/TGLO, and NAVO models. The model was initialized from Friday morning and afternoon overflight data. The leading edge may contain tarballs that are not readily observable from the imagery (hence not included in the model initialization).



Forecast location for oil on 02-May-10 at 0600 CDT

Strong SE winds of 20-25 kts are expected to continue through Saturday night. Beginning Sunday, winds are forecast to be more southerly and decrease to 15-20 kts by Sunday night. These winds will continue to bring oil towards the shoreline along the Mississippi River Delta, Breton Island, and the Chandelier Islands. This morning's strong winds and high seas were not ideal for overflight viewing. The model initialization will not reflect possible tarballs which could impact shoreline ahead of the prediction. Winds on Monday are expected to be from the SW becoming NW by Monday night.

Trajectory	
	Uncertainty
	Light
	Medium
	Heavy
	Beached oil



this scale bar shows the meaning of the distribution terms at the current time